



G.A. SYSTEMS, Inc.
SPECIALIZING IN CAFETERIA SERVING LINES

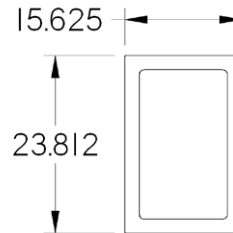
PROJECT: _____

ITEM #: _____

MODEL: _____

Rev: Dec 6, 22

C0221 AD1, C0222 AD2 Pan Adapter



Specifications

The pan adapters are constructed of 18 gauge 304 stainless steel #4 finish and are designed to fit into G.A. Systems speedline cabinet food well. The pan adapters rest on the upper ledge of the speedline cabinets and the food pan flange rest on top of the pan adapter.

The AD1 pan adapter (shown above) holds one standard 12" x 20" food pan. The AD2 pan adapter (shown above) holds two standard 12" x 20" food pans. Crock adapters are also available, see graph table and drawings below. For custom adapters contact G.A. Systems.

ACCESSORIES

Small adapter bar / C0419

Large adapter bar / C0667

ITEM	MODEL	WIDTH	DEPTH	HEIGHT
C0221	AD1	15-5/8"	23-13/16"	7/8"
C0236	AD1 HC53	15-1/4"	23-13/16"	7/8"
C0220	AD136	15-5/8"	29-3/4"	7/8"
C0810	AD136 SOLID	15-5/8"	29-3/4"	7/8"
C0522	AD136 HC5336	115-1/4"	29-3/4"	7/8"
C0222	AD2	29"	29-13/16"	7/8"
C0288	AD2 SOLID	29"	29-13/16"	7/8"
C0237	AD2 HC53/HC68	29-1/4"	23-13/16"	7/8"
C0233	AD236	29"	29-13/16"	7/8"
C0545	AD236 SOLID	29"	29-13/16"	7/8"
C0523	AD236 HC5336	29"	29-3/4"	7/8"
C0524	AD236 HC6836	29"	29-3/4"	7/8"
C0233	CR5	15-5/8"	23-13/16"	7/8"
C0234	CR8	29"	29-3/4"	7/8"

